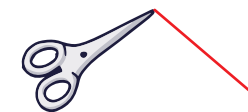


1 Cut along the red line



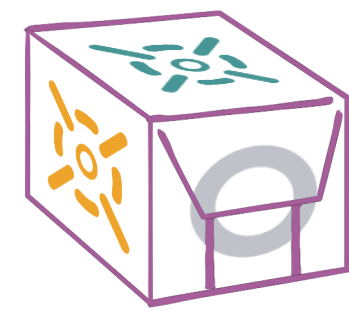
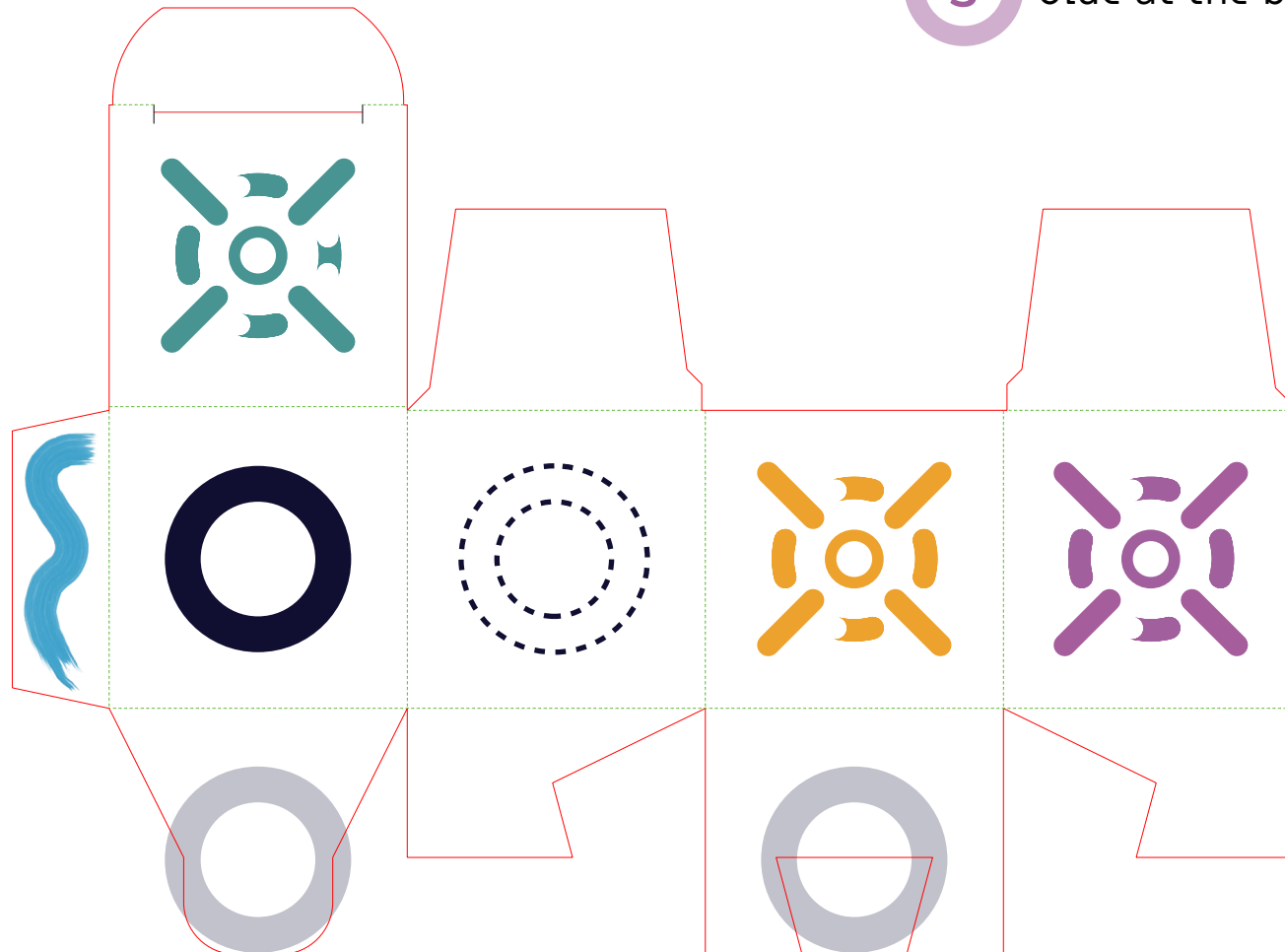
2 Fold the green dashed lines



3 Glue at the blue marked spot

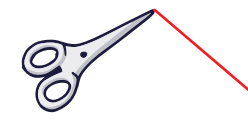


4 Note that the symbols must be visible on the outside. Fold the bottom flaps of the cubes to create a complete gray symbol.

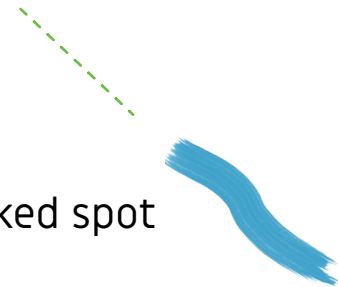


You need 6 of these dice

1 Cut along the red line

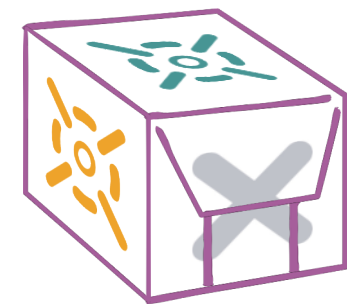
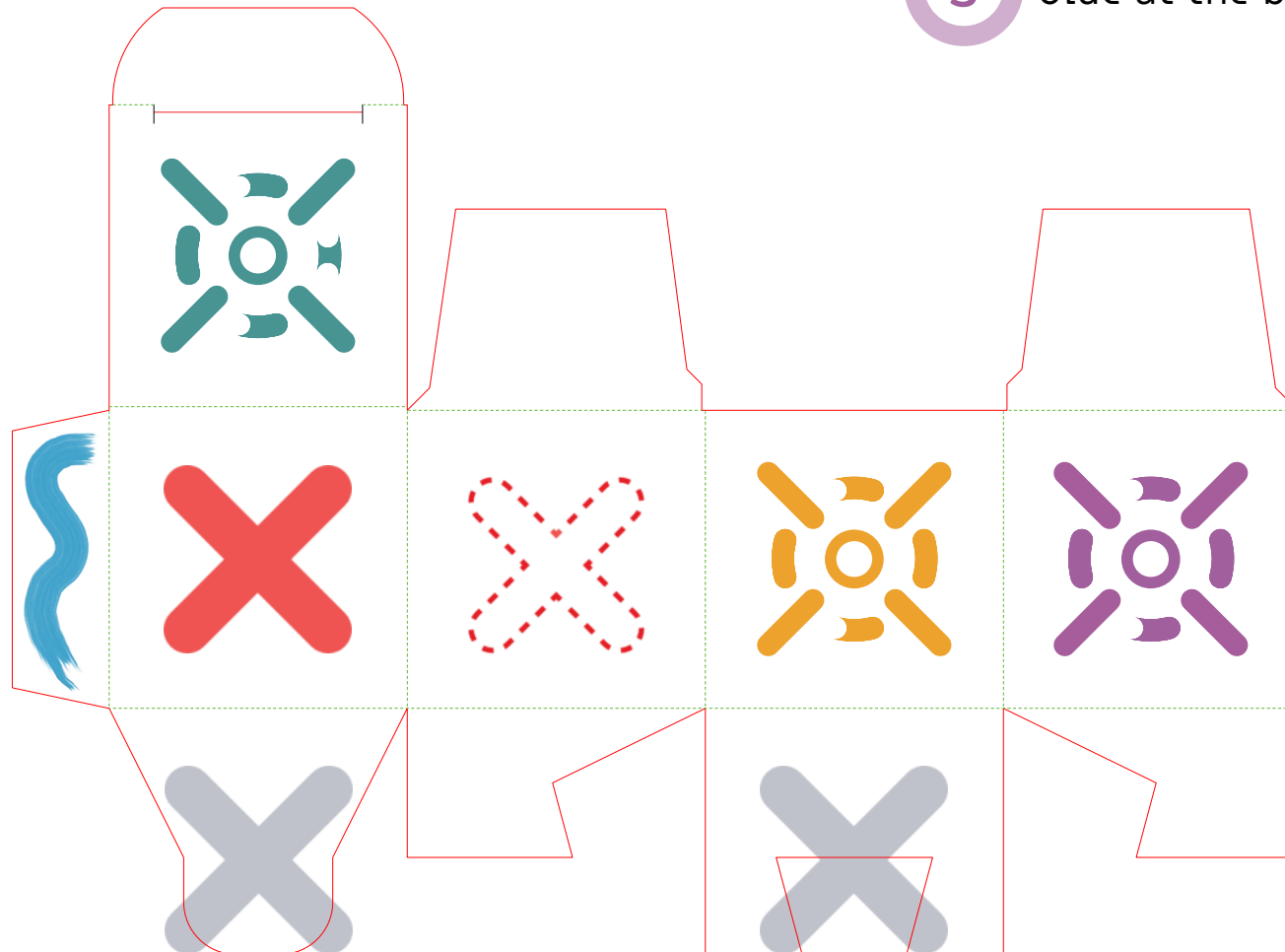


2 Fold the green dashed lines



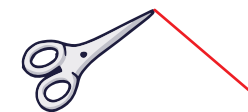
3 Glue at the blue marked spot

4 Note that the symbols must be visible on the outside. Fold the bottom flaps of the cubes to create a complete gray symbol.



You need 6 of these dice

1 Cut along the red line



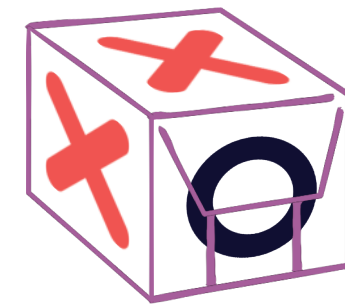
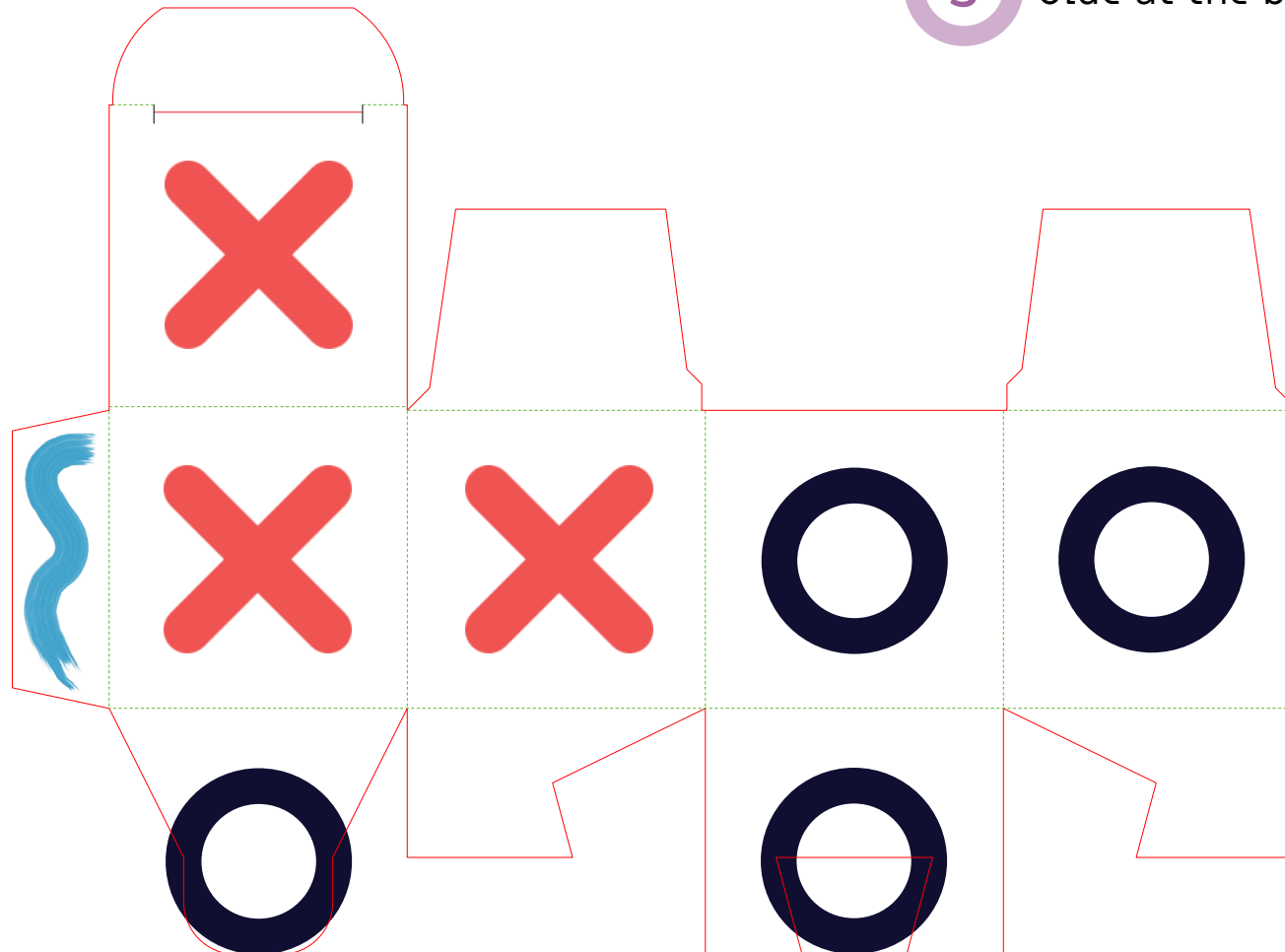
2 Fold the green dashed lines



3 Glue at the blue marked spot



4 Note that the symbols must be visible on the outside. Fold the bottom flaps of the cubes to create a complete symbol.



You need one dice

Tüftel Akademie

DAS QUANTEN 1X1

Tiq Taq Toe

